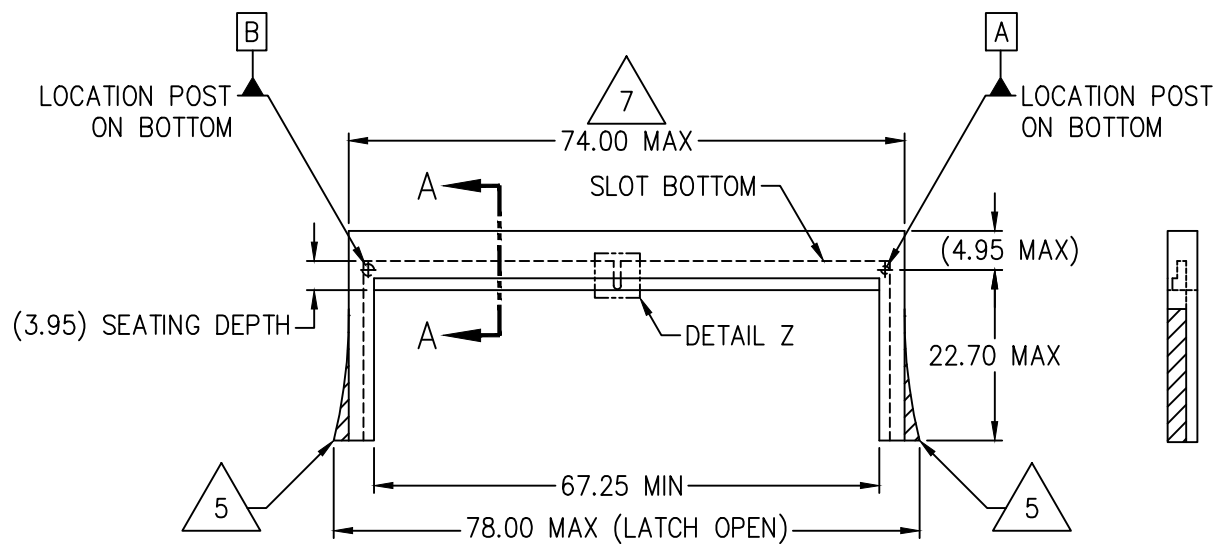


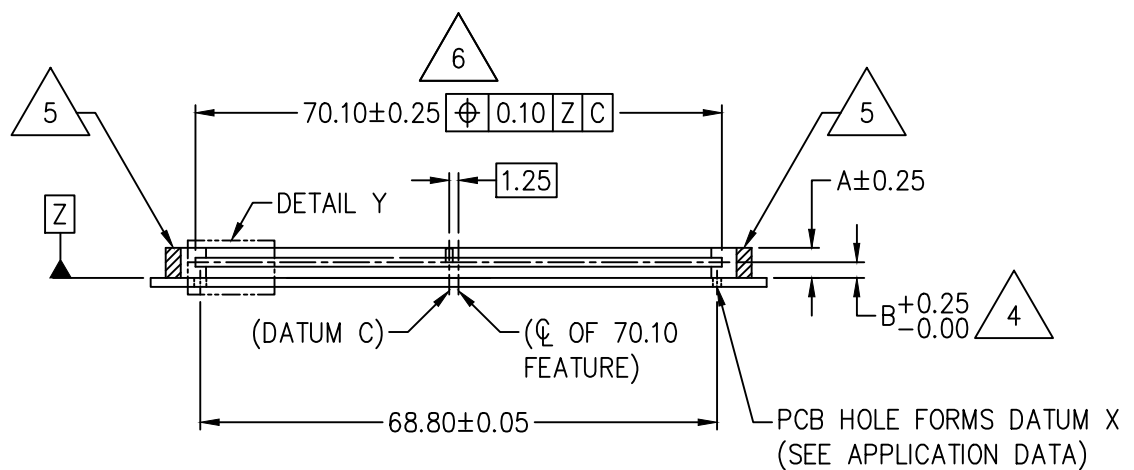


## STANDARD ORIENTATION

JEDEC SOLID STATE PRODUCT OUTLINE Copyright © 2019 JEDEC		THIS <i>REGISTERED OUTLINE</i> HAS BEEN PREPARED BY THE JEDEC JC-11 COMMITTEE AND REFLECTS A PRODUCT WITH ANTICIPATED USAGE IN THE ELECTRONICS INDUSTRY; CHANGES ARE LIKELY TO OCCUR.				
TITLE 262 PIN DDR5 SODIMM, 0.50MM PITCH SOCKET		PACKAGE DESIGNATOR PDXC-LB262-I0p5- R78p0x27p65Z#- R0p45x0p15Z0p2	NUMBER SO-024	ISSUE A	DATE APR 2019	SHEET 1 OF 13

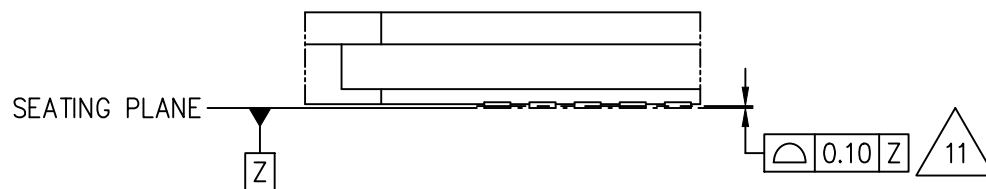
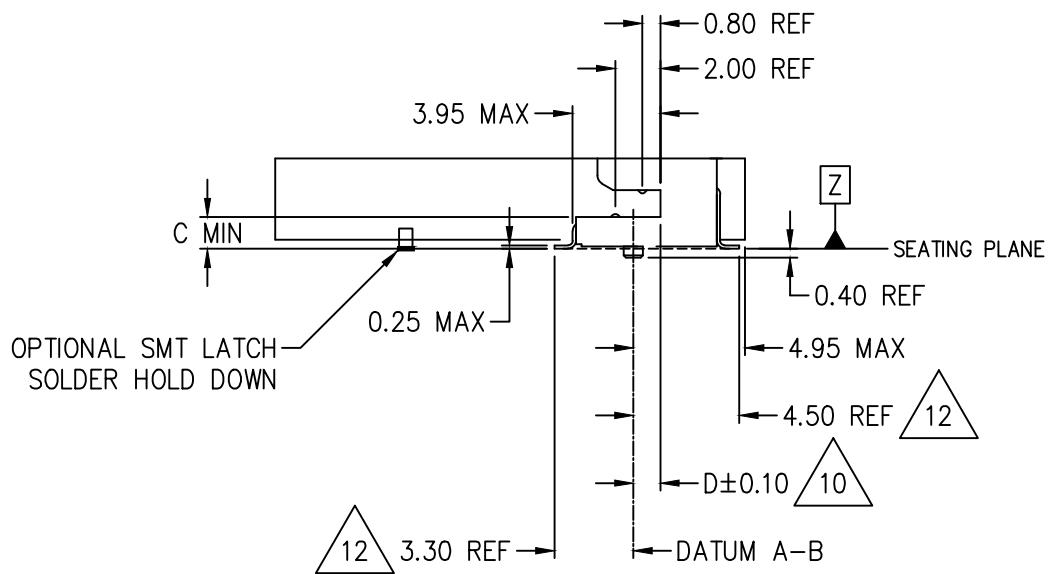


TOP VIEW



FRONT VIEW (PCB AND SOCKET)

REVERSE ORIENTATION



COPLANARITY INCLUDES SMT  
SOLDER HOLD DOWNS, IF PRESENT

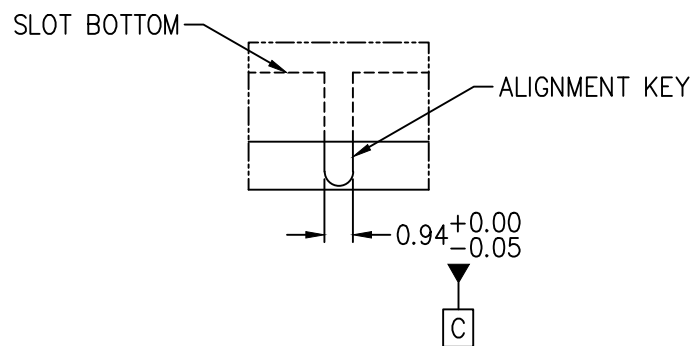


TABLE 1

DDR5 SOCKET VARIATIONS				
SYMBOL	Ay	By	Cy	Dy
A	4.00	5.20	8.00	9.20
B	2.10	3.30	6.10	7.30
C	1.45	2.55	5.45	6.55
D	1.20	1.20	—	—
NOTES	—			
REF	14–193			
ISSUE	A			

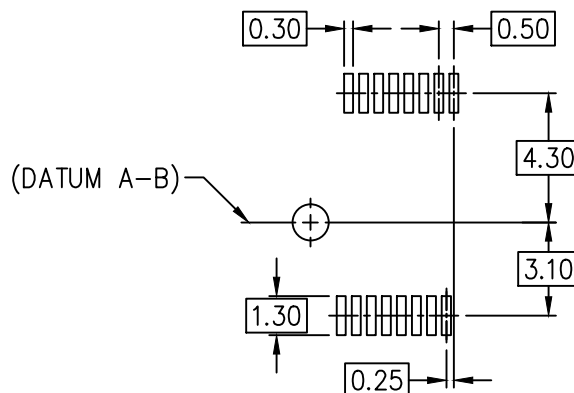
y: A: STANDARD ORIENTATION, B: REVERSE ORIENTATION

VARIATION AA REFERS TO A CONNECTOR THAT IS 4.00 HIGH WITH PIN 1 IN THE UPPER ROW, RIGHT MOST LOCATION (STANDARD).

VARIATION BB REFERS TO A CONNECTOR THAT IS 5.20 HIGH WITH PIN 1 IN THE LOWER ROW, LEFT MOST LOCATION (REVERSE).

NOTES:

1. DIMENSIONING AND TOLERANCING CONFORM TO ASME Y14.5–2009.
2. TOLERANCE ON ALL DIMENSIONS IS  $\pm 0.15$  UNLESS OTHERWISE SPECIFIED.
3. ALL DIMENSIONS ARE IN MILLIMETERS.
4. DIMENSION B REPRESENTS THE DISTANCE BETWEEN THE CENTERLINE OF THE CONNECTOR CARD SLOT AND THE HOST BOARD SURFACE.
5. KEEP OUT AREA RESERVED FOR SOCKET EJECTORS – BOTH ENDS.
6. SLOT LENGTH IS SPECIFIC TO THE MATING REGION OF THE SOCKET INTERFACE THAT FACILITATES ROUGH ALIGNMENT OF THE MODULE.
7. THE DIMENSION APPLIES ONLY TO THE HOUSING
8. REFER TO DDR5 SODIMM REGISTERED MODULE OUTLINE MO-XXX FOR MODULE DIMENSIONS.
9. THE FIGURE BELOW IS INCLUDED FOR REFERENCE AND DEPICTS A BOUNDARY AREA (OUTER LOCUS) OF A RECTANGULAR GEOMETRY REPRESENTING THE LEAD/CONTACT OF THE CONNECTOR. THIS LOCUS INCLUDES ALLOWANCES FOR POSITION AND SIZE TOLERANCES. THE FIGURE SHOWN BELOW DEFINES THE ZONE WITHIN WHICH THE SMT SOLDER LEADS OF THE CONNECTOR MUST ALWAYS BE LOCATED. THIS IS NOT THE MOTHERBOARD FOOTPRINT.



OUTER LOCUS OF SMT SOLDER LEAD POSITION



DATUM A-B MUST ALIGN WITH THE CARD SLOT BOTTOM WITHIN  $\pm 0.10$ .

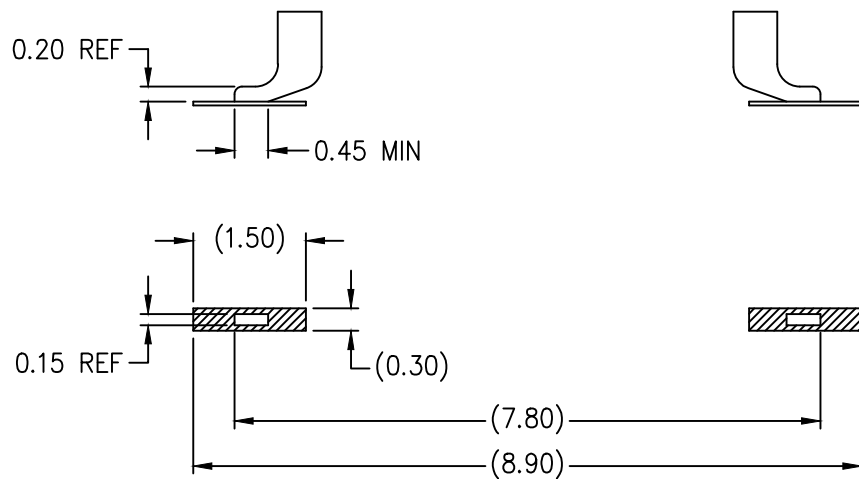


COPLANARITY MEASUREMENTS ARE MADE BY PLACING THE CONNECTOR ONTO A FLAT STEEL SURFACE.

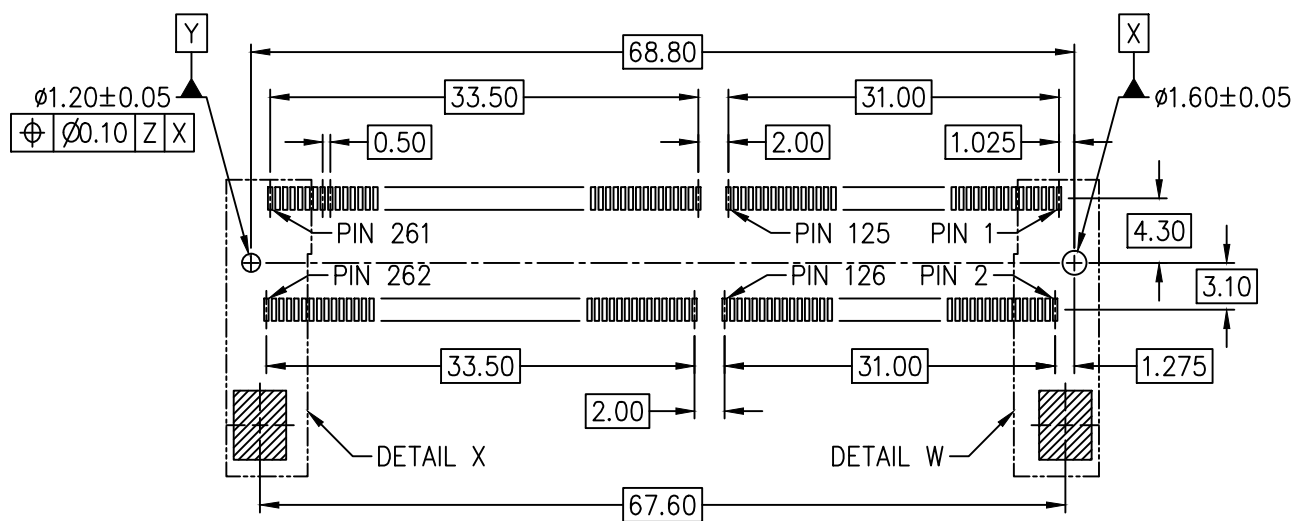


THE DIMENSIONS ARE RECOMMENDED FOR SMT COMPONENT ASSEMBLY ON PRINTED CIRCUIT BOARD.

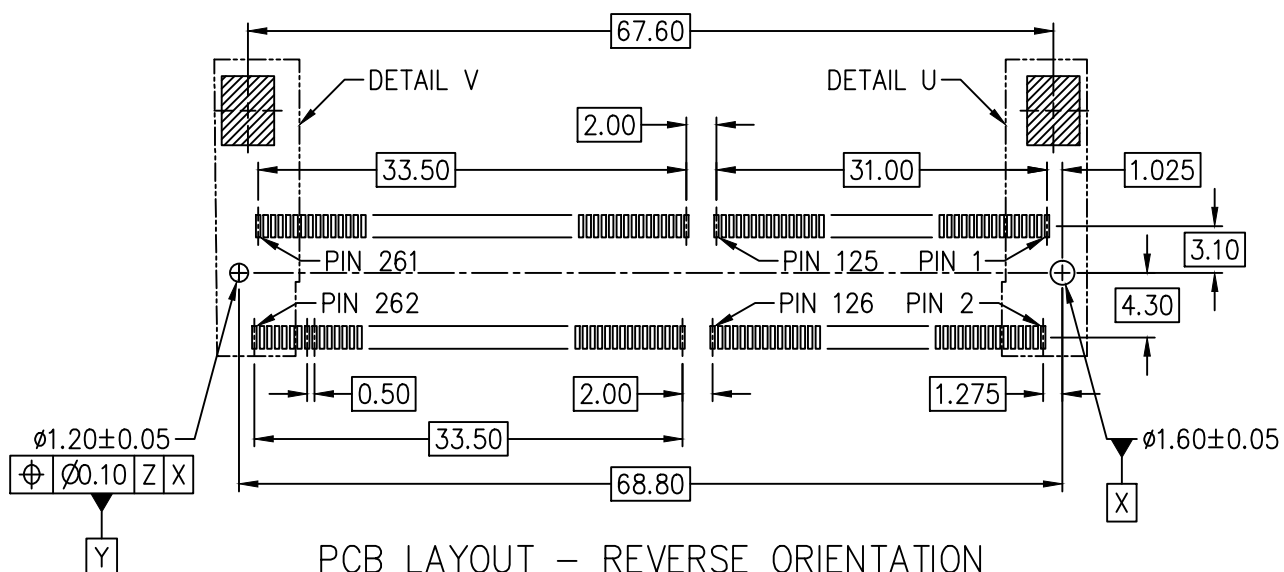
13. THE LEAD DIMENSIONS ARE RECOMMENDED FOR CONNECTOR DFM COMPATIBILITY.



APPLICATION NOTE : DDR5

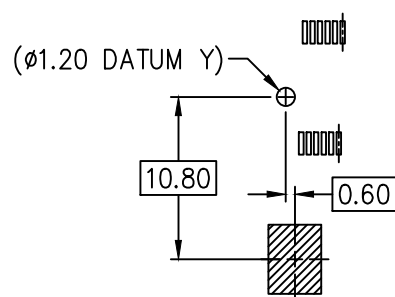


PCB LAYOUT – STANDARD ORIENTATION  
VARIATIONS AA AND BA

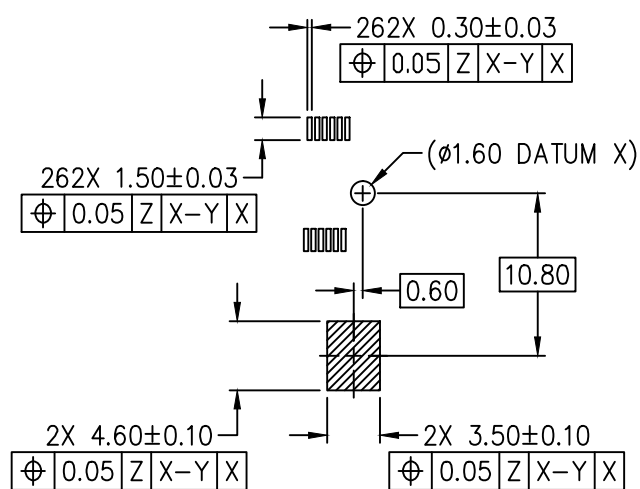


PCB LAYOUT – REVERSE ORIENTATION  
VARIATIONS AB AND BB

APPLICATION NOTE : DDR5



DETAIL X



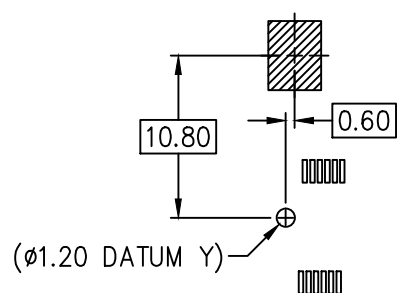
DETAIL W

STANDARD ORIENTATION

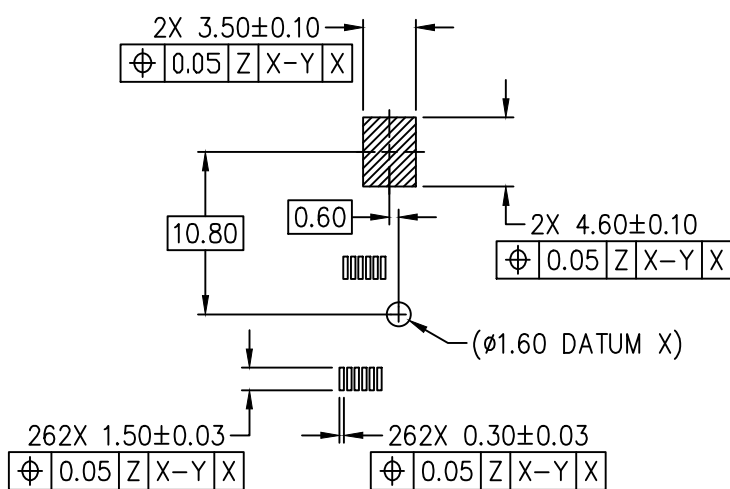
JEDEC SOLID STATE PRODUCT OUTLINE Copyright © 2019 JEDEC	TITLE 262 PIN DDR5 SODIMM, 0.50MM PITCH SOCKET	NUMBER SO-024	ISSUE A	DATE APR 2019	SHEET 8 OF 13
--	--	------------------	------------	------------------	------------------



APPLICATION NOTE : DDR5



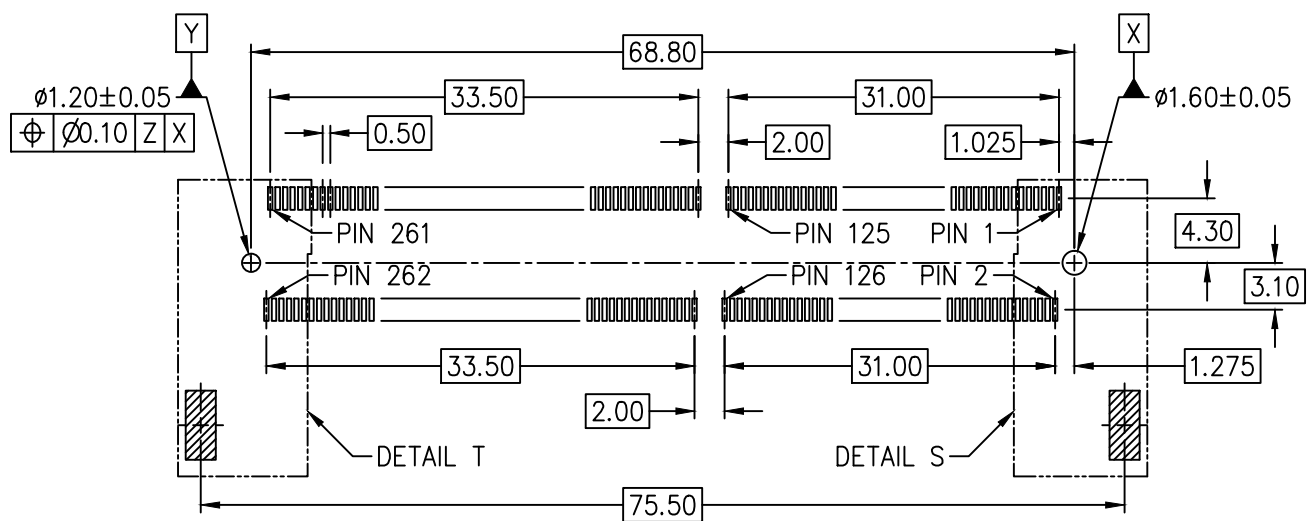
DETAIL V



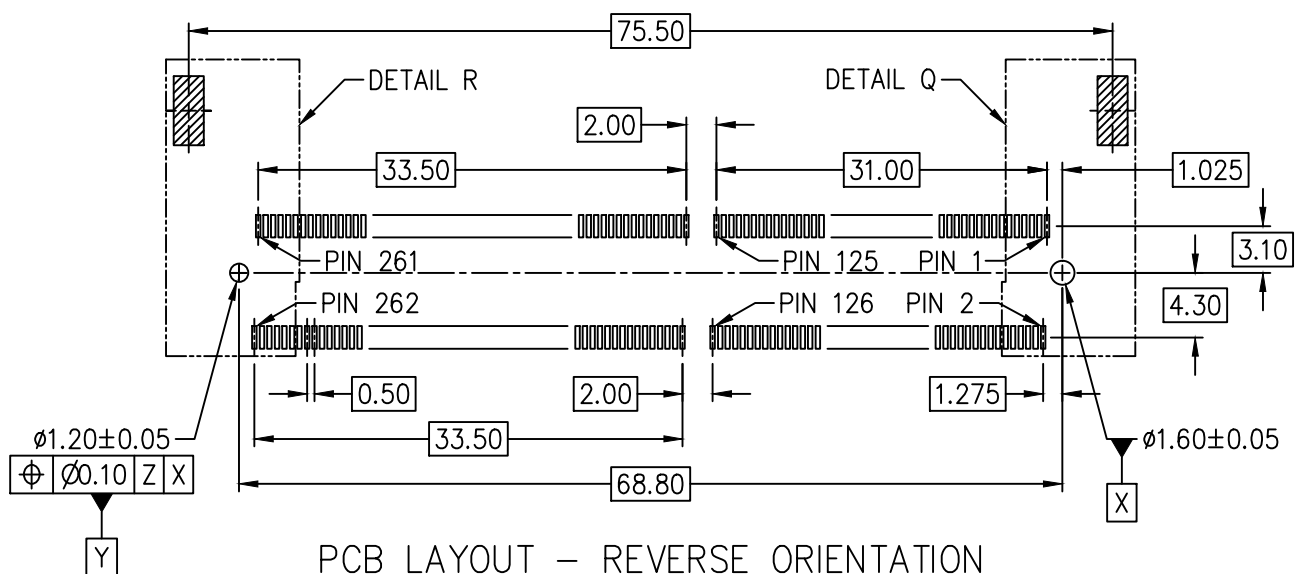
DETAIL U

REVERSE ORIENTATION

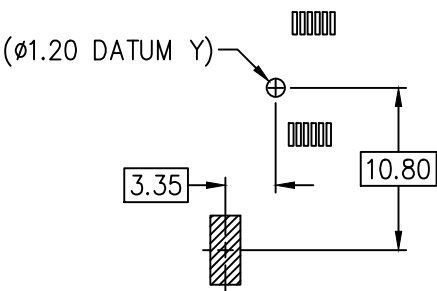
APPLICATION NOTE : DDR5



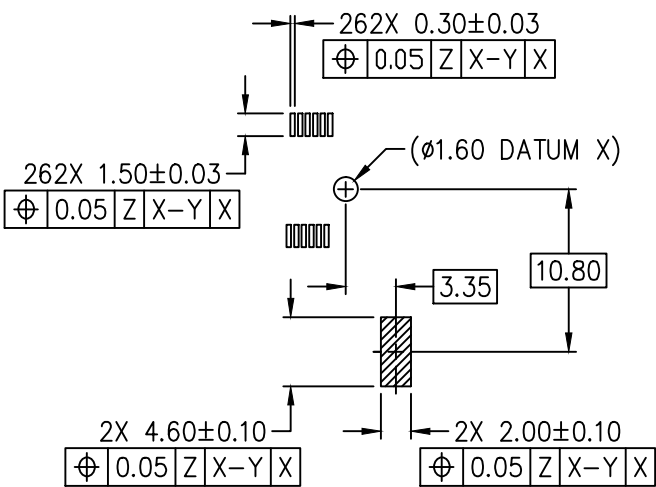
PCB LAYOUT – STANDARD ORIENTATION  
VARIATIONS CA AND DA



PCB LAYOUT – REVERSE ORIENTATION  
VARIATIONS CB AND DB



DETAIL T

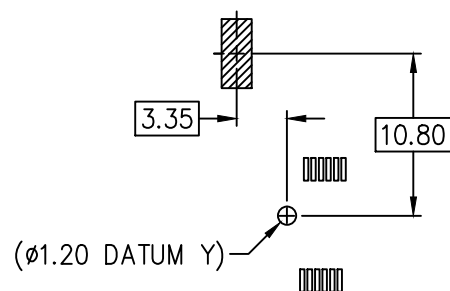


DETAIL S

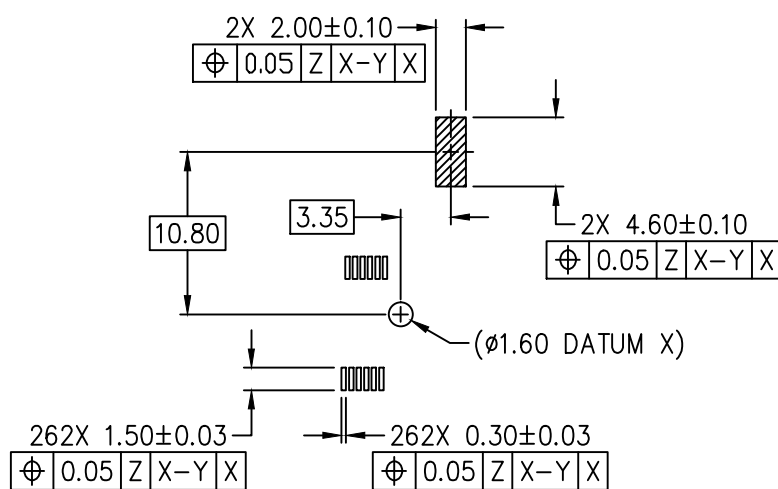
STANDARD ORIENTATION

JEDEC SOLID STATE PRODUCT OUTLINE Copyright © 2019 JEDEC	TITLE 262 PIN DDR5 SODIMM, 0.50MM PITCH SOCKET	NUMBER SO-024	ISSUE A	DATE APR 2019	SHEET 11 OF 13
--	--	------------------	------------	------------------	-------------------

APPLICATION NOTE : DDR5



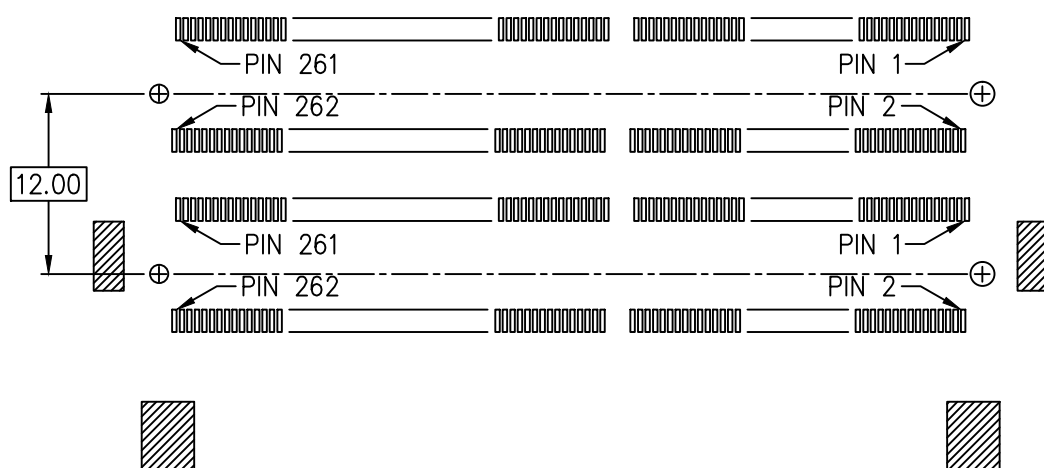
DETAIL R



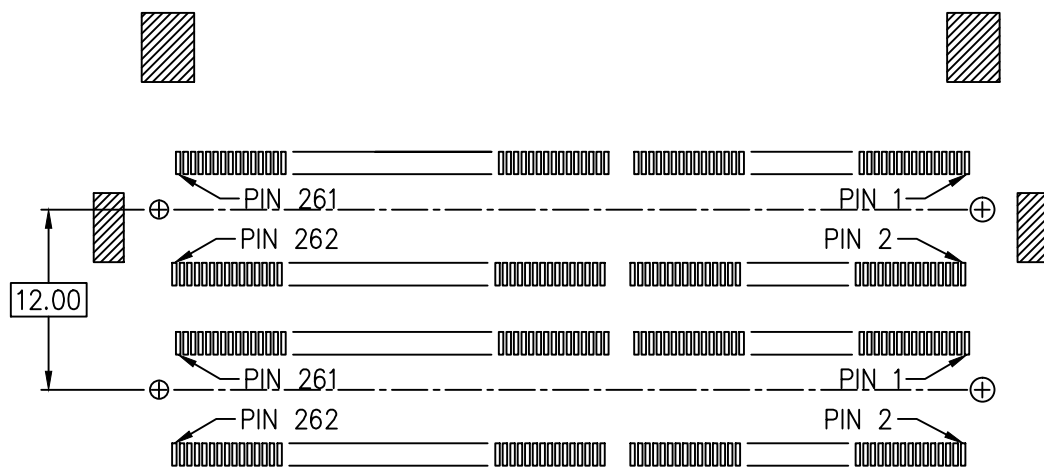
DETAIL Q

REVERSE ORIENTATION

# APPLICATION NOTE : DDR5 STACKING



PCB LAYOUT – STACKED STANDARD ORIENTATION  
USING VARIATIONS AA, BA, CA, AND DA



PCB LAYOUT – STACKED REVERSE ORIENTATION  
USING VARIATIONS AB, BB, CB, AND DB

# STP (3D) FILE RECORD

3D FILE NAMES MAY EXCEED LENGTH REQUIREMENTS FOR SOME SOFTWARE TOOLS.

STP FILE NAME	ISSUE	DATE	ITEM NUMBER
PDXC-LB262-I0p5-R78p0x27p65Z4p0-R0p45x0p15Z0p2	A	APR 2019	14-193
PDXC-LB262-I0p5-R78p0x27p65Z5p2-R0p45x0p15Z0p2	A	APR 2019	14-193
PDXC-LB262-I0p5-R78p0x27p65Z8p0-R0p45x0p15Z0p2	A	APR 2019	14-193
PDXC-LB262-I0p5-R78p0x27p65Z9p2-R0p45x0p15Z0p2	A	APR 2019	14-193

# CHANGE RECORD

IF THE CHANGE INVOLVES ANY WORDS ADDED OR DELETED (EXCLUDING DELETION OF ACCIDENTALLY REPEATED WORDS), THE CHANGE IS TO BE INCLUDED BELOW. PUNCTUATION CHANGES MAY OR MAY NOT BE INCLUDED.

INITIAL ISSUE: A	DATE: APRIL 2019	ITEM NUMBER: 14–193
------------------	------------------	---------------------

CHANGE RECORD HISTORY:
------------------------

ISSUE:	DATE:	ITEM NUMBER:
--------	-------	--------------

LOCATION	CHANGED FROM:	CHANGED TO: